




asana  nangka

For us home is not only place, it's a person a surrounding
and feeling like we're finally home



the asana nangka neighbourhood is located within minutes from schools, hospitals, malls and offices. poised to take advantage of the fast growing south jakarta business and lifestyle district at simatupang



within the peace and serenity of the residential community at asana nangka. residents of asana will also enjoy the advantages of this community and the well established infrastructure of the facilities and services that exist there, including 24 hours security and well trained security personel, cctv and the dedicated services of the management team

facilities

green open space

wide street

private swimming pool

ground water

cctv and security 24 hours

underground electricity

one gate system

strategic location

location

bebas banjir



FATMAWATI GENERAL HOSPITAL

TRANSmrt
TRANSMART
CILANDAK



RAGUNAN ZOO



asana @ nangka



KRL STATION LENTENG AGUNG

- 20** minutes halim perdana kusuma airport
- 12** minutes gerbang tol cilandak
- 15** minutes aeon tanjung barat
- 15** minutes rumah sakit fatmawati
- 15** minutes stasiun lenteng agung
- 5** minutes transmart cilandak
- 15** minutes mrt fatmawati
- 12** minutes cilandak town square
- 15** minutes kemang village

siteplan





**STANDARD
TYPE**
UNIT 5



STANDARD TYPE

UNIT 6

STANDARD TYPE

14.3 x 9.6

Land Area 150 sqm

Building Area 282 sqm



Basement



First Floor



Second Floor



Third Floor

Disclaimer : While every effort has been made to ensure the accuracy of the information herein at the time of press, the developer and our agents make no warranty, representation or undertaking whether expressed or implied, nor does it assume any legal liability, wether direct or indirect, or responsibility for the accuracy, completeness or usefulness of any information. The information herein is subject to change and does not form part of any offer contract. All layout are not to scale and all illustration are artist impression only.



3 + 1



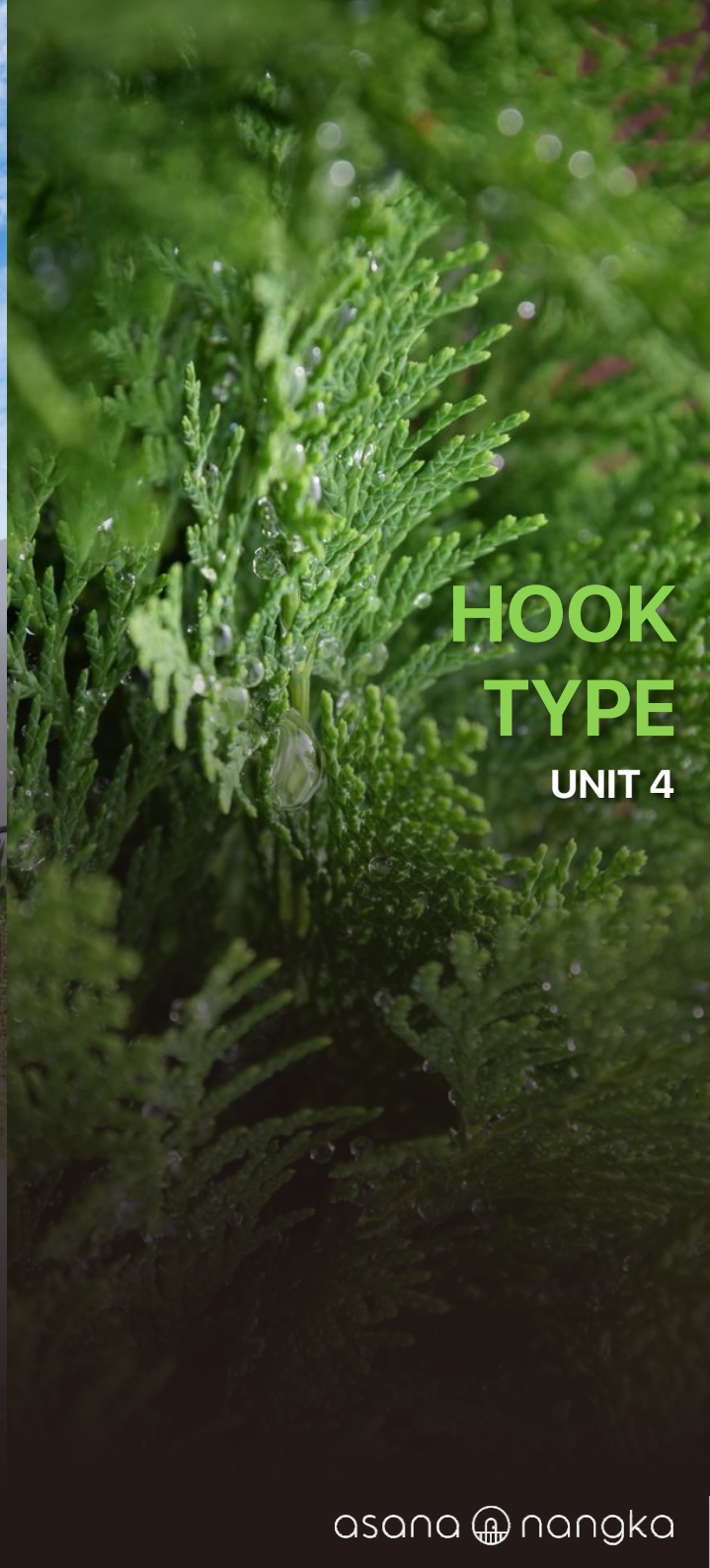
1



3+1



2



**HOOK
TYPE**
UNIT 4

HOOK TYPE

14.4 x 12

Land Area 174 sqm

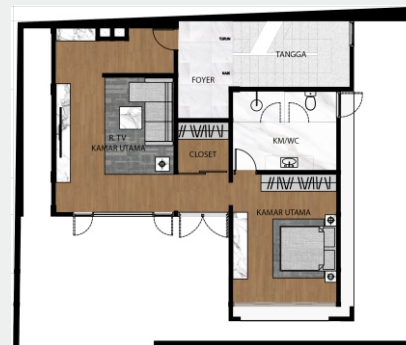
Building Area 305 sqm



Basement



First Floor



Second Floor



Third Floor

Disclaimer : While every effort has been made to ensure the accuracy of the information herein at the time of press, the developer and our agents make no warranty, representation or undertaking whether expressed or implied, nor does it assume any legal liability, wether direct or indirect, or responsibility for the accuracy, completeness or usefulness of any information. The information herein is subject to change and does not form part of any offer contract. All layout are not to scale and all illustration are artist impression only.



3 + 1



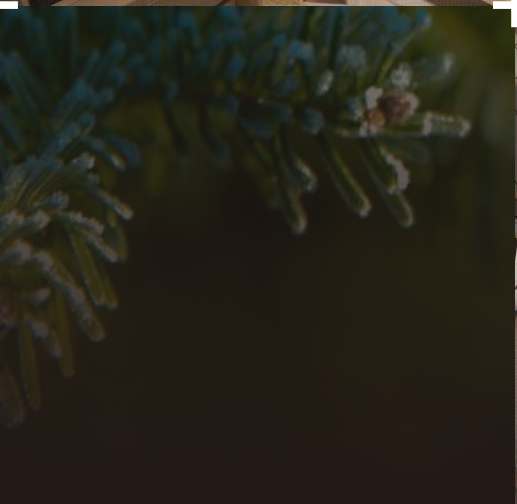
1



3 + 1



2



INTRODUCTION

BORE PILE AND FOOTPLAT

STRUCTURE

REINFORCED CONCRETE

WALL

BRICK + PLASTERED

WALL PAINT

DULUX WATERSHIELD (*EXTERIOR*)

MOWILEX CENDANA (*INTERIOR*)

ROOF

REINFORCED CONCRETE + AQUAPROOF

FLOOR

HOMOGENEOUS TILE 60 X 120 (*INTERIOR & TERRACE*)

SPC FLOOR (*BEDROOM AREA*)

CERAMIC EX. ROMAN (*SERVICE AREA*)

DOOR

MAIN : KAMPER WOOD FRAME & SOLID WOOD DOOR - FINISHING DUCO

OTHER : ALUMUNIUM FRAME & DOUBLE TEAKWOOD DOOR - FINISHING DUCO

WINDOW

ALUMUNIUM FRAME WITH GLASS

CEILING

HOLLOW FRAME & GYPSUM BOARD

GARAGE

IRON DOOR EX. KEND

ELECTRICITY

POWER 4400 WATT - UNDERGROUND SYSTEM

SANITARY

TOTO

RAILING

HOLLOW MINIMALIST

WATER

SUMUR PANTEK - DEEP 18 METER

asana nangka

HUBUNGI BAGIAN PEMASARAN KAMI DI :



021 - 7397708



0811 - 8987 - 708 & 0851 - 8682 - 7708

ASANA NANGKA

JALAN NANGKA NO. 71
JAGAKARSA, JAKARTA SELATAN

Developer

PT. BHUMI AMAYA GROUP
Kenari Djaja Lt.3 Jalan RS. Fatmawati 72/14-15
Kel. Gandaria Utara. Kec. Kebayoran Baru
Jakarta Selatan - 12140